

An Innovative
Approach for
*Today and
Tomorrow*



Look Beyond The Ordinary For Creative Infrastructure Solutions

A COMMITMENT TO EXCEED EXPECTATIONS

At Design Engineering, Inc. (DEI) we believe a routine approach does not serve the client's interests. Instead, we strive to exceed expectations. With over 35 years in operation as professional engineers, DEI's expertise ranges from hydraulics and hydrology to complex bridge design, historic redevelopment and everything in between. DEI combines our experience and knowledge with our client's vision to create successful projects.

DEI is a certified Woman Owned Small Business Enterprise, founded by our CEO.

Formed in 1984, Design Engineering, Inc. made a commitment to always produce top-quality projects for our clients; the commitment has not wavered over three decades. We fulfill that commitment by doing more than just offering professional engineering services to businesses, the community and the government. We overdeliver every day:

- Developing innovative methods to ensure client satisfaction
- Consulting closely with you throughout every phase of the project
- Conducting quality assurance programs meeting state and federal requirements

SUCCESSFUL PARTNERSHIPS BOTH PUBLIC AND PRIVATE

By using a set of internal checks and balances, clients are assured that design schedules are established, progress is monitored, feedback is collected and all project specifications are properly met or exceeded. While meeting clients' stated goals and objectives, DEI successfully works with government entities from massive (U.S. Army Corps of Engineers) to hyper-local (private, historic building renovations). We work with federal, state, municipal and private clients every day.



DEI is a "One-Stop Shop"

DEI is experienced in taking projects from the pre-planning and conceptual stage through the design phase to implementation, deployment, and finally, project maintenance.

CIVIL ENGINEERING

Airport Facilities
Building Structural Design
Highway/Interstate Design
Urban Roadway Design
Bridge Design
Parking Facilities Design
Site Development
Port and Marina Design
Flood Protection Design
Water Systems
Wastewater Systems
Hydraulics and Hydrology
Drainage Systems
Docks and Wharves
Program Management
Traffic Engineering

STRUCTURAL ENGINEERING

Bridge Design
Building Design
Flood Protection
Historic Building Redevelopment

CONSTRUCTION SERVICES

Construction Administration
Resident Inspection

OTHER SERVICES

Expert and Forensic Services
Program Management
Economic Analysis
Operations and Maintenance
Historic Tax Credit Analysis
Permitting
Planning

“

DEI promises to combine our experience and knowledge with our client's vision to attain project success.

A Portfolio of Our Winning Work

From award-winning bridge projects to innovative, standard-setting designs, DEI's projects have withstood the test of time and the elements, including Hurricane Katrina.

Featured Project

AIRLINE TRAFFIC CIRCLE *JEFFERSON PARISH*

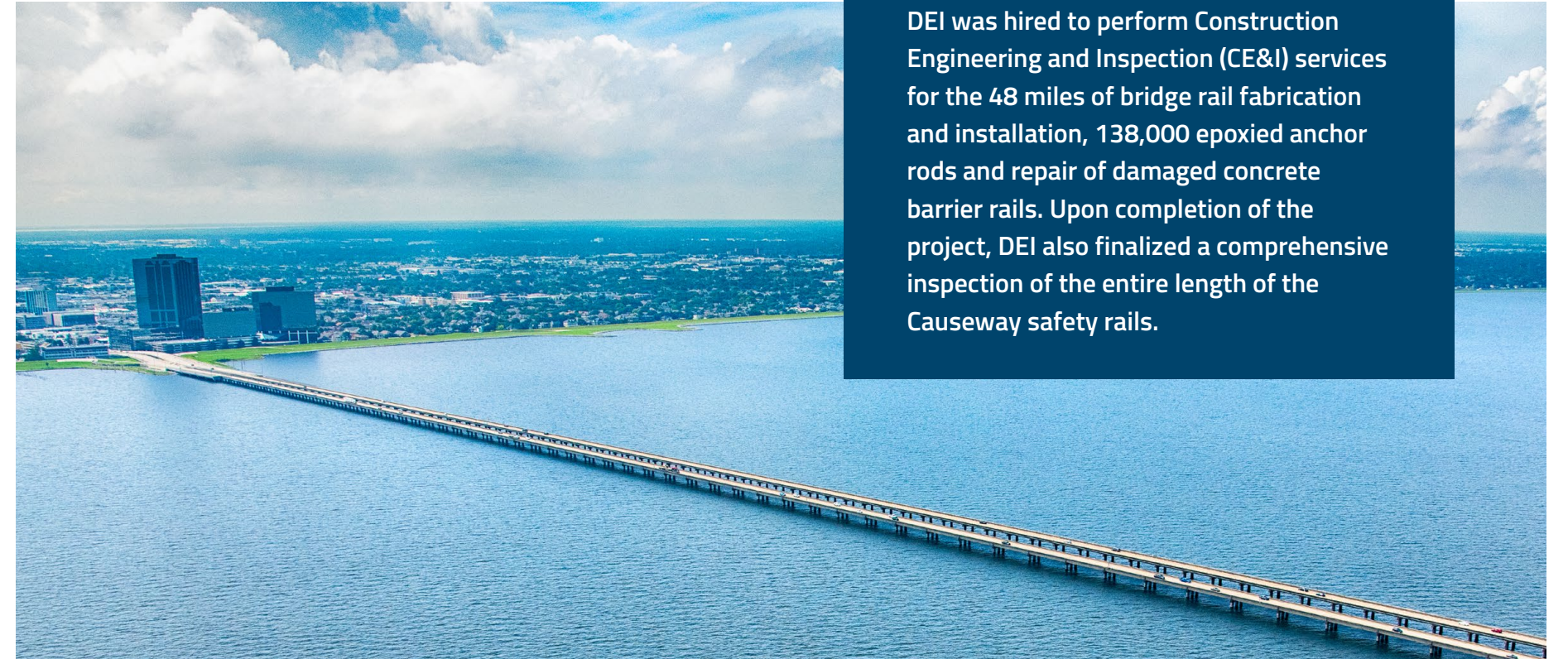
DEI conducted a comprehensive structural inspection of all portions of the structure and submitted a comprehensive repair/rehabilitation report recommending repairs/corrective measures. DEI created plans, specifications and contract documents to repair/replace the overpass's girders, bearings, deck, guardrails and drainage system. DEI performed Construction Administration and Resident Inspection often on a 24 hour schedule to maintain traffic operations.

DEI is designing innovative solutions to improve this structure so that it might serve the people of Jefferson Parish for many more decades to come.



The multi-level rotary interchange and associated bridges at Causeway Blvd. and Airline Highway were constructed by the GNOEC, the Causeway Commission, in the 1950s.

Since the structure was completed, little maintenance has been performed.



DEI was hired to perform Construction Engineering and Inspection (CE&I) services for the 48 miles of bridge rail fabrication and installation, 138,000 epoxied anchor rods and repair of damaged concrete barrier rails. Upon completion of the project, DEI also finalized a comprehensive inspection of the entire length of the Causeway safety rails.

Featured Project

LAKE PONTCHARTRAIN CAUSEWAY BRIDGE *METAIRIE/MANDEVILLE*

The Causeway Bridge is two 24-mile spans that serve as a central corridor and evacuation route for the Greater New Orleans region. It is the longest continuous bridge over water in the world.

The Greater New Orleans Expressway Commission authorized a project to replace the metal railing on both sides of the southbound Causeway Bridge to meet new safety standards and reduce the number of accidents involving vehicles overtopping the guardrails and descending into Lake Pontchartrain.

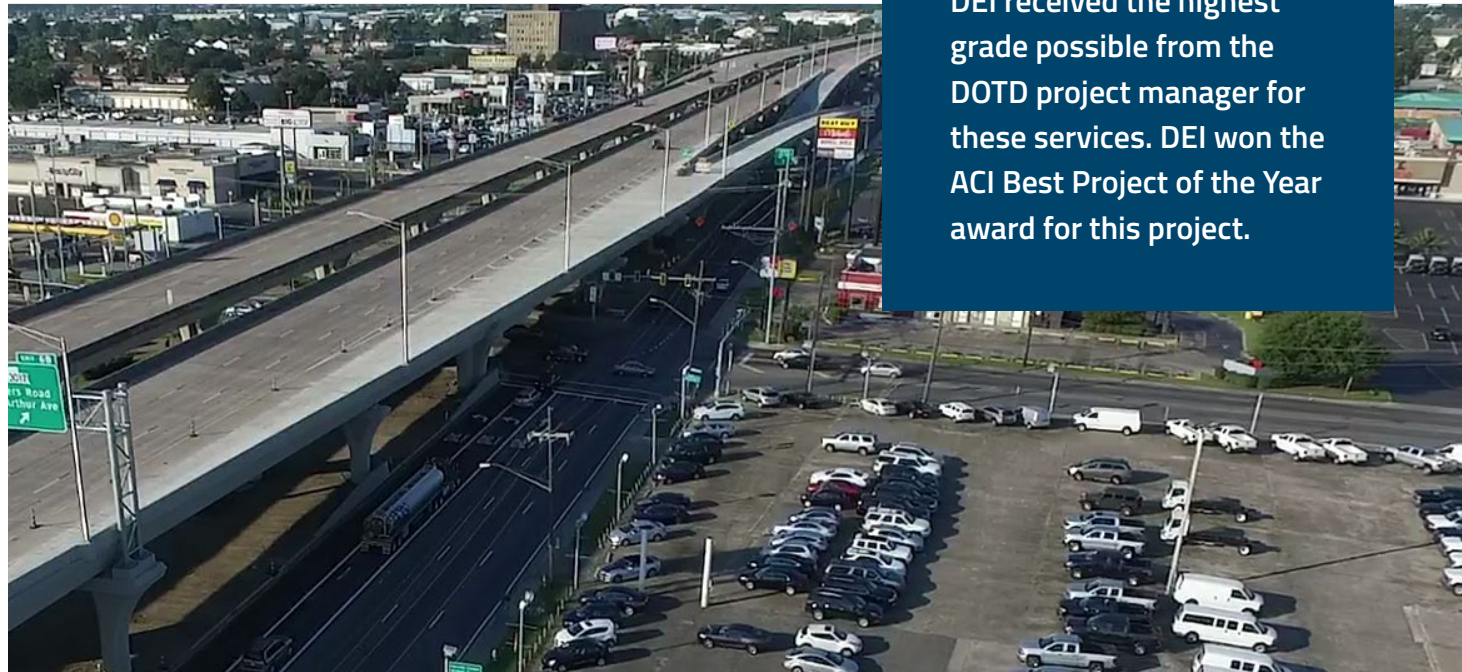
dei-engr.com

MACARTHUR DRIVE JEFFERSON PARISH

DEI was the prime consultant for this \$85.2 million project and was responsible for the feasibility study, preliminary and final design and construction services, including a study of several alternatives. In addition, DEI contracted with the Louisiana Department of Transportation and Development (LaDOTD) to provide construction engineering services during the construction.

Phase 1 of the project consisted of relocating the existing at-grade frontage road, drainage improvements, utility relocations and right-of-way acquisition from Manhattan Boulevard to Peters Road.

Phase 2 of the project included widening the existing elevated Westbank Expressway from Manhattan Boulevard to the Harvey Canal in order to accommodate a new entrance and exit ramp. This phase of the work included the demolition of an existing entrance ramp and a part of the elevated structure.



DEI received the highest grade possible from the DOTD project manager for these services. DEI won the ACI Best Project of the Year award for this project.

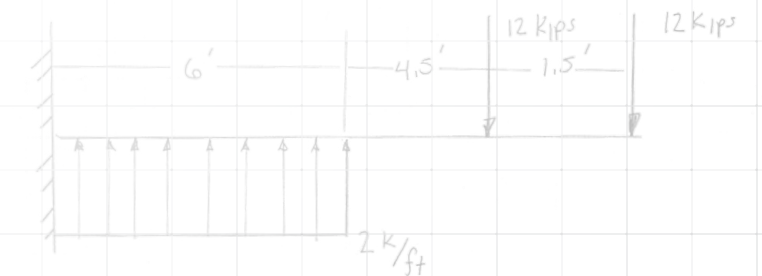
The project has been open and in use for several years and has received outstanding reviews from the motoring public, Jefferson Parish and DOTD.



822 HOWARD AVENUE NEW ORLEANS

This project was a complete renovation and restoration of a building erected in the 1920s to convert it into a residential apartment building with 15 units encompassing 23,000 square feet. The entire interior was removed, the foundations were strengthened, floors, windows, HVAC and all other features were replaced.

The exterior structure was reinforced as required, all while maintaining the historical facade and silhouette of the building. An additional story was added to create a penthouse suite atop the existing structure.



The DEI Team



JIM MARTIN, PH.D., P.E.
PRESIDENT

Dr. Martin has been practicing engineering since 2000 and is licensed and has provided services in multiple states. He is the President and Principal in Charge of the DEI Team and is a court-recognized expert in hydraulics, hydrology, sewerage, and water. He has served as the President of the New Orleans ASCE and ACEC Chapters and as Chairman of the Jefferson Business Council. He has also been a JEDCO and GNO Inc. Board Member.

EDUCATION

BS in Civil Engineering, University of Alabama, 1998
MS of Environmental Engineering, Tulane University, 2000
Doctor of Philosophy, Tulane University, 2003
Coastal Engineering Certificate, Old Dominican University, 2010



BEAU BAUDIER
GENERAL COUNSEL

Mr. Baudier officially serves as General Counsel to Design Engineering, Inc. and is also involved in strategic planning, quality assurance and construction. He manages contracts; subcontracts and subcontractors; insurance; and corporate risk. Mr. Baudier is an expert in financial analysis, permitting, real estate development, construction, software development and historic tax credits. Mr. Baudier has won several awards for Excellence in Construction and Real Estate as well as Excellence in Historic Preservation.

EDUCATION

BS in Computer Science, Stanford University, 2002
MS in Civil Engineering, Stanford University, 2004
Juris Doctorate, Duke University, 2007



JOHN W. HOLTGREVE, P.E.
CHIEF ENGINEER

Mr. Holtgreve has decades of experience designing and constructing all varieties of Civil Engineering projects. There isn't a challenge or surprise that he hasn't faced and overcome on a project. He has earned a Master of Engineering Degree from Tulane University and has held various positions with multiple engineering professional societies.



BRETT LIUZZA, P.E.
CIVIL ENGINEER

Mr. Liuzza is a graduate of LSU and has worked on a variety of infrastructure improvement projects across the Civil Engineering spectrum. He has designed and constructed asphalt and concrete roadways, drainage, water and sewer infrastructure, as well as flood and erosion control projects.



BEN BARTLETT, P.E., P.T.O.E.
CIVIL ENGINEER

Mr. Bartlett is a graduate of the prestigious Military College of South Carolina (The Citadel). He has earned a Master of Engineering Degree from Auburn University and is a certified Professional Traffic Operations Engineer (P.T.O.E). He is also an expert in hydraulics and hydrology.



JOHN KARLIN, S.E., P.E.
STRUCTURAL ENGINEER

Mr. Karlin has earned a Master of Engineering Degree in Structural Engineering from the University of Illinois Urbana-Champaign. Following his degree, he immediately achieved the selective credential of Professional Structural Engineer (S.E.) He is an expert in historical wharf, bridge, and building rehabilitation and redevelopment. He has designed and constructed marquee award-winning projects.



COLLIN GILLEN, E.I.
CIVIL ENGINEER INTERN

Mr. Gillen is a 2020 graduate of Louisiana State University, and began contributing to the DEI team immediately upon his arrival in May of 2020. Since joining DEI, he has been integral to the design and construction of multi-million-dollar bridge, road and drainage projects. Mr. Gillen has experience working with New Orleans DPW, Jefferson Parish, LaDOTD, and the Greater New Orleans Expressway Commission.



BRADY PECHON, E.I.
CIVIL ENGINEER INTERN

Mr. Pechon is an LSU alumni who joined DEI after a stint in the construction industry. He performs drainage, roadway, site and quantity calculations, as well as works on complex permitting issues concerning railroad rights-of-way. In addition, he has performed structural inspections in marine environments, like the Mississippi River.



TED HEMELT
CADD MANAGER

Mr. Hemelt has been working and drafting at DEI for over 25 years. He has led the effort on complex drainage pump stations, mechanical flood protection gates, high-rise interstate bridges, multi-lane roadways, as well as complex intersection movement, geometry and signalization.



JAY RAFFERTY
CONSTRUCTION MANAGER

Mr. Rafferty has more than 20 plus years of experience in construction and materials testing. He has Site Manager experience and training from LaDOTD and has multiple American Concrete Institute certifications. He leads DEI's construction group; he often leads the oversight of a dozen projects with up to 15 inspectors. This includes night operations, live traffic conditions, subsurface excavations and open water conditions. He has previously led a testing laboratory and multiple teams of field sampling technicians.



CHIRAG, E.I.
STRUCTURAL ENGINEER INTERN

Mr. Chirag has earned a Master of Engineering Degree in Structural Engineering from the prestigious engineering school at Virginia Tech. His focus of study and research was measuring and modeling of bridge performance using finite element analysis. At DEI he has worked on complex bridge renovations, historical building redevelopment and marine structures in the Mississippi River and Lake Pontchartrain.



LIONEL MIZERO, E.I.
STRUCTURAL ENGINEER INTERN

Mr. Mizero has earned a Master of Engineering Degree in Structural Engineering from Iowa State University. His Master's research was focused on the reduction of the incidence of helicopter wire-strike. He has taught Introduction of Structural Analysis to Junior students at Iowa State. He has worked in San Francisco and the Seattle Bay area. At DEI, he has focused his work on developing structural solutions for historical bridge and structure rehabilitation, as well as new bridges built as attachments to existing aged structures.



JEFF MONFREY
CONSTRUCTION INSPECTOR

Mr. Monfrey is an expert senior inspector. He has multiple certifications in bridge rehabilitation, structural concrete, concrete paving, asphalt paving, embankment, base course, and others. He has worked on multiple, multi-billion-dollar bridge projects, as well as historic bridges, moveable bridges, tunnels and other structural and transportation-focused projects.



MADALYN WILLIAMS
BUSINESS DEVELOPER

Ms. Williams received her marketing degree from the University of New Orleans. At DEI, she writes proposals, manages social media, creates physical marketing materials, manages the website and represents DEI with its existing clients, as well as in new markets.

Our goal is to see beyond
the ordinary and create
efficient design solutions
supported by outstanding
technical analysis.

Design Engineering, Inc.
P: (504) 836-2155
dei-engr.com
info@dei-engr.com

3330 West Esplanade Avenue
Suite 205
Metairie, LA 70002



BEST ENGINEERING FIRM
TOP WINNER 2020



BEST ENGINEERING FIRM
WINNER 2021



BEST PLACE TO WORK
WINNER 2022